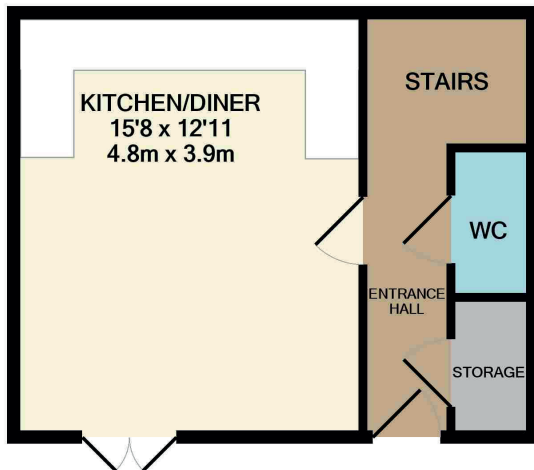
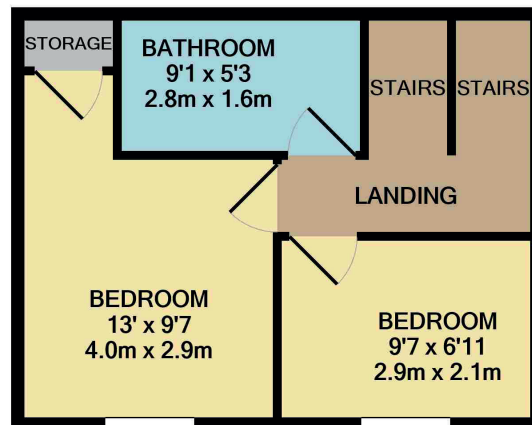


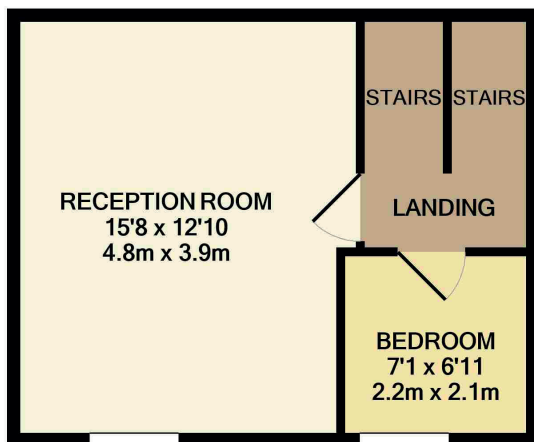
6 Steeple Mews



GROUND FLOOR
APPROX. FLOOR
AREA 300 SQ.FT.
(27.9 SQ.M.)



2ND FLOOR
APPROX. FLOOR
AREA 290 SQ.FT.
(26.9 SQ.M.)



1ST FLOOR
APPROX. FLOOR
AREA 300 SQ.FT.
(27.9 SQ.M.)

6 STEEPLE MEWS, PEPPER LANE, LUDLOW
TOTAL APPROX. FLOOR AREA 890 SQ.FT. (82.6 SQ.M.)

Whilst every attempt has been made to ensure the accuracy of the floor plan contained here, measurements of doors, windows, rooms and any other items are approximate and no responsibility is taken for any error, omission, or mis-statement. This plan is for illustrative purposes only and should be used as such by any prospective purchaser. The services, systems and appliances shown have not been tested and no guarantee as to their operability or efficiency can be given

Made with Metropix ©2020